

# Barony of Tir-y-Don

# The NoD-Y-RIT

February AS 54 (CE 2020)

Volume 39 Issue 02  
Society of Creative Anachronism (SCA Inc.)

## Table of Contents

Weekly Activities in the Barony .....	2
Arts & Science and Social Schedule	3
Articles & Class Notes .....	4
Kingdom Calendar .....	15
The Barony Around the Web .....	16
Baronial Meeting Minutes .....	17
Baronial Officer Regnum .....	20
Statement of Ownership .....	21
Submissions .....	21
Marshal Information .....	22
Award Recommendations .....	22

## The Coronet of the Barony of Tir-y-Don



Their Excellencies:

***Baron John Biggeheved***

***Baroness Oriana of Xylina***

*Photo Credit: Mistress Tannis of Tir-y-Don*

# Weekly Activities in the Barony

---

## Sundays

### 10AM

Archery Practice  
Requires Safety Class  
Contact Marshal of Archery

**Newport News City Park**  
Archery Range

Call 757-888-3333 for Safety Class  
Schedule.  
Call Marshal of Archery before attending.

### 1PM

Fighter Practice and Social  
Heavy/Rapier  
Contact Knight Marshal

**Tabb Library**  
100 Long Green Blvd,  
Yorktown, VA 23693  
Map: <http://bit.ly/2iBgfXR>

This isn't just for Heavy and Rapier  
Fighters. Bring your picnic lunch, your  
projects, and enjoy our populace. The  
outdoor site is the grassy field to the right  
of the library entrance. Bring chairs and  
keep entrance to library clear.

## Mondays

### 7PM

Armory Night  
Contact Tim Prickett

timprickett2@gmail.com  
(757) 833-3139

Contact Tim before attending.

## Thursdays

### 7PM

Arts & Sciences and Social  
Contact MOAS  
Schedule: <http://bit.ly/2zH0mR5>

Baroness Kaleeb's House  
Address Available on  
request.

Contact MOAS, Baroness Kaleeb, or  
Chronicler for more details.



# Arts & Science and Social Schedule

---

February 2020

06 – Spring Class Planning

If you have a subject you're interested in teaching or learning more about, please contact the A&S officer at [moas@tirydon.atlantia.sca.org](mailto:moas@tirydon.atlantia.sca.org) or come to the February planning meeting!



## Articles & Class Notes

---

Feather Paint Brushes .....	5
14 <sup>th</sup> Century European Men's Clothing.....	6



## How to make a feather paint brush

by Mistress Kaleeb the Green Eyed

Tudor Artist makes a feather paint brush (2 minutes)

<https://www.youtube.com/watch?v=x17BA33-7gs>

Park Ranger Mike with a modern bush craft video Nature Rockz (4 minutes)

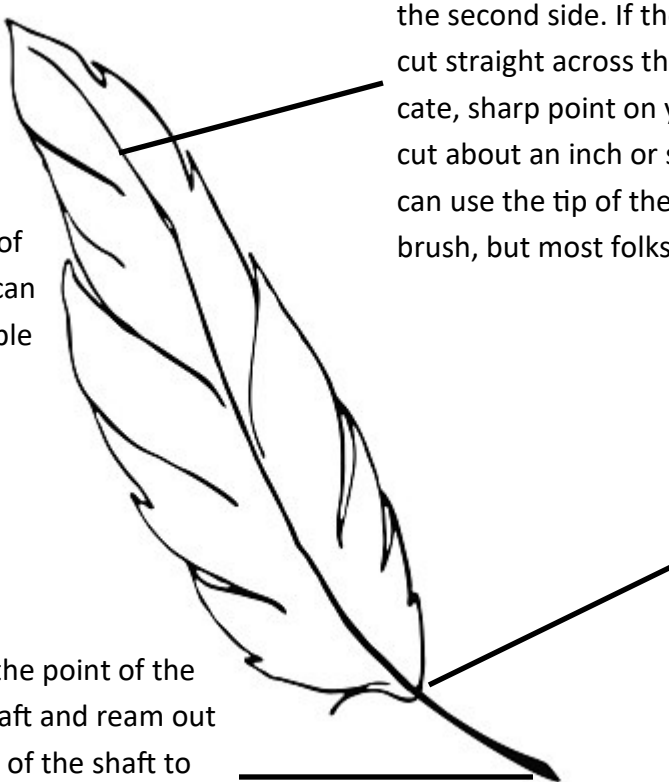
<https://www.youtube.com/watch?v=d94-SZnULBI>

Norse Lady making a feather paint brush, different way to cut the tip.

<https://www.youtube.com/watch?v=KUKRq1crSew>



Detail of St. Luke as a painter, c 1360, Bohemia. The Gospel Book of John of Troppau

- 
1. Clip the feather here; straight across but not through the second side. If the feather has an off center quill, then cut straight across the thicker side if you want a very delicate, sharp point on your brush or vice versa. Repeat the cut about an inch or so down the shaft of the feather. You can use the tip of the feather for a softer wide tip to your brush, but most folks treat that area as waist.
2. The body of the feather can be cut multiple times for replacement brush tips.
3. Cut here being careful not to squish the quill or cut into the "backbone of the feather." If you cut this part of your quill into 2 parts you can get 2 brushes. Soak the quill in water to soften it, if you are having trouble with the shaft shattering.
4. Nip off the point of the feather shaft and ream out the center of the shaft to create a hollow tube.
5. Gently slide the feather tip into the narrow end of the quill, fat end first.
6. Peel a stick, of the size you would like to hold in your hand, and whittle down one end so that it fits snugly in the open end of your quill brush tip. Do not mash these two pieces together or you will crack the hollow tube of the quill. Choose a non-poisonous wood, as artists sometimes chew on paint brush handles.
7. Secure the tip of your brush to the handle. Most Medieval glue was water based, keep that in mind when you are cleaning your paint brush. Also remember that you might need to replace the feather tip, so wax or string could be a better choice.

# 14th Century European Men's Clothing

HE Jane Fox

The SCA is often called a “medieval recreation society”. When many of us think of the Middle Ages, it is the fashion of the 14th century that is immediately called to mind. Tunics, hoods, and tights are what many picture. This class handout is for basic information about the layers of clothing and accessories worn by men living in Europe and England during the 14th century. Let's get more into the details of what men were wearing, and move beyond a simple, generic medieval style that cannot be defined to a particular era.

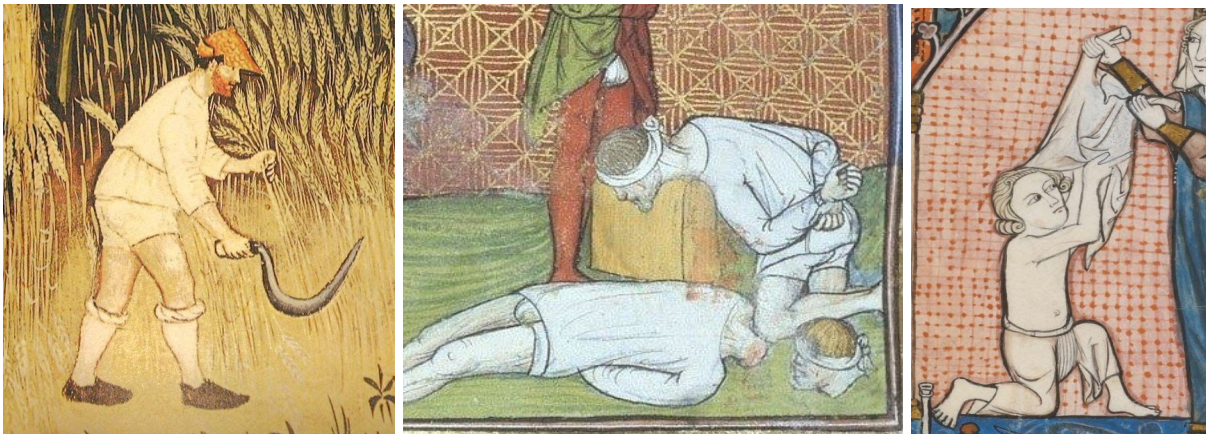
## Undergarments

The first layer for a man is going to be what we would call underwear today, but back then they were called “braies” or “**breeches**”. They were made from linen, generally white or unbleached in color, and worn directly against the skin around your hindquarters and legs. They could be quite short, almost like what we now call briefs, or could be as long as your mid-calf. A peasant might only have a pair or two of breeches, while a nobleman could have dozens. They would be changed as often as you could afford to have them cleaned, or when you had time clean them yourself.



Prophetes sur les papes du XIVe et du XVe, 1401-1500. Smithfield decretals, 1300-1340. Maciejowski Bible, late 13th C.

The next layer was often a linen **shirt**. We have images of men working outside in just a shirt and breeches, and I have seen reenactors wear a white shirt and breeches alone at very hot events to great effect. This is about the most minimal amount of 14th century historically-accurate clothing you could get away with wearing when it's blazing hot outdoors. Rectangular in construction or lightly fitted, they could be from high hip to thigh length. Shirts were worn underneath cotehardies, pourpoints, doublets, and surcotes.

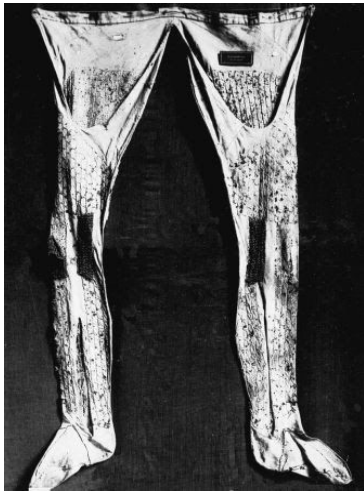


Muckley 1386.

Chroniques de France ou de St Denis, 1380-1400.

Frere Laurent, Somme le Roi 1294.

The next layer of underwear are **hose**, also called “chausses”. They could be knee length (as seen above in the scything picture) or full-leg length, but images containing full length hose are more readily found. Hose could be made from linen or wool, and come in all colors available to the 14th century man. They could be all one color or multiple colors and patterns, where the legs don’t match. It is most common to see both legs the same solid color. Most hose were footed, but you can also see hose with straps around the feet or just ending at the ankle. Some hose were worn over shoes. Hose were cut on the bias (diagonal) of the fabric to give natural stretch, helping to make them very fitted. Hose were most often two separate legs that tied to the breeches or a fabric belt with eyelets, but joined hose (both legs attached to each other) and fully joined hose (legs attached to each other and a codpiece) are easily found.



14-15th century extant hose, Bayerische National Museum.



The Rutland Psalter, c1260.



Hours of Catherine of Cleves, 1440

## Main Garments

The **tunic** or “cote” was the simplest outer layer for men. These would pull over the head and have no fastenings, except perhaps a button at the neck or sleeve cuff. They often utilized rectangular construction, but could also have fitted armholes and sleeves. A simple linen tunic would be worn by working men or during the hot summer months, while a wool tunic will keep you warm. It was not necessary to wear a shirt underneath the tunic, but if you are wearing a wool tunic, a linen shirt or under tunic would keep it from potentially itching. Tunics can be as short as your hip or nearly floor length, but most hit around the upper knee. A fitted tunic would be worn underneath a cotehardie or surcote. Tunics can be in any color and pattern, or parti-color. They can be simple or fancy, plain or decorated, with embroidery or hand-made trim.



Rutland Psalter, c1260.



Maciejowski Bible, mid 13th c.



Cantigas of Santa Maria, mid 13th c.



Roman de la Rose, 1365.

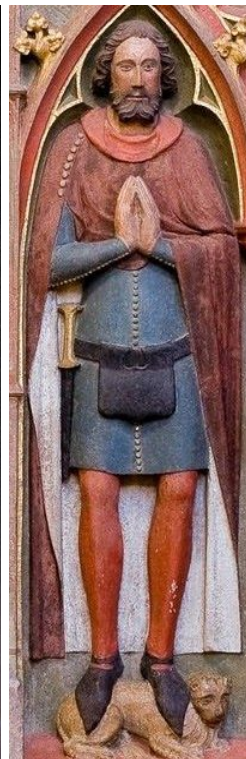


Luttrell Psalter, 1325-1340.

**Cotehardies** are the ubiquitous piece of clothing for the 14th century. These were form-fitting to the body, with buttons down the front, either to the waist or the hem. Sleeves were short or long, with long sleeves often having buttons from elbow to wrist. Tippetts could be worn separately, or the sleeves could be cut to incorporate an integrated tippet. A shirt or tunic would be worn underneath the cotehardie. They could be made from linen, wool, or silk (which includes brocades, damasks, and velvets). Patterns or solids are both correct, and also parti-color. Buttons were often made from the same fabric as the garment, but could also be metal, shank-style. Length should be not generally lower than your knee, and as short as just beneath the rear (best to wear joined hose with that style!).



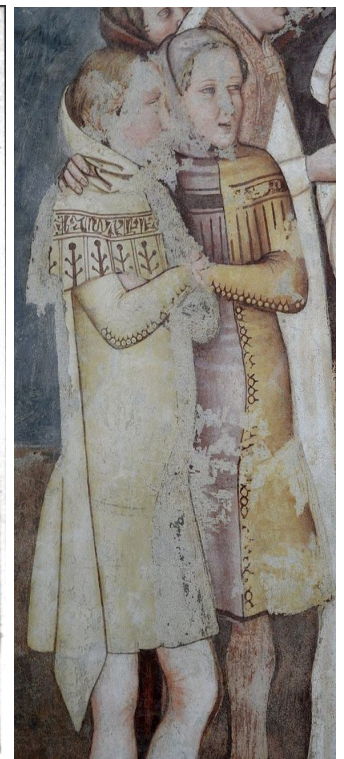
Walter de Helyon, 1350.



Johann von Holzhausen, 1393.



Godefroid de Holeier, 1367.



Musei Civici, Treviso, 1355-1358.





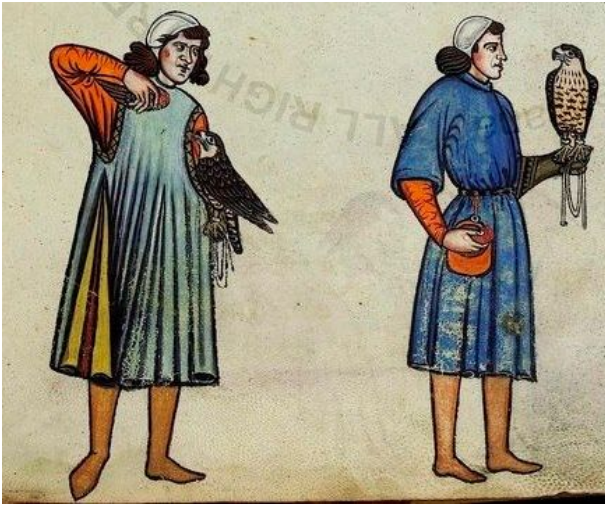
Speculum humanae salvationis, 1360.

**Surcotes** are another top layer that can be worn over the tunic. These often pulled over the head without fastenings, could have buttons at the neck, be short or long sleeved, and were anywhere in length from knee to floor. A surcote and a cotehardie can be very similar when they are both short sleeved and button down the front, but a cotehardie is usually much more fitted in the torso, and is also a more fashionable garment. Also like cotehardies, they could have sleeves cut with tippetts. Surcotes can also be sleeveless and similar to a tabard- this is an excellent way to display a small amount of expensive fabric. Split them up the front and back for another style. Fabrics can include linen, wool, and silk. Decorate them to make a fancy garment, with embroidery, beads and pearls, and hand made trims. Add your heraldic device in applique. Make them from wool and line them for warmth, or trim them in fur. Surcotes are considered a outerwear layer when made from heavy, warm fabrics, and can be worn in place of a cloak, allowing for more freedom of movement.



Romance of Alexander, 1338-44. No buttons on front makes them surcotes and not cotehardies.

Ormesby Psalter, 1310.



Falconry Book of Frederick II, late 13th c.

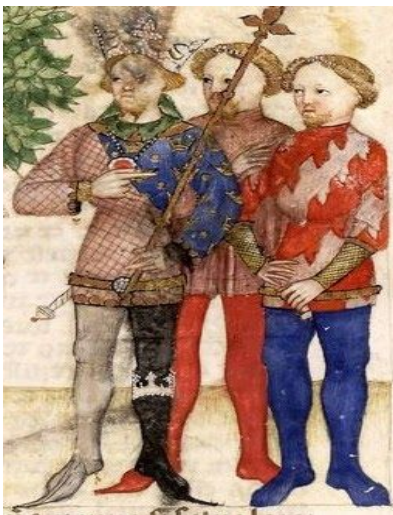


Roman de la Rose, 1348.



Luttrell Psalter, 1325-1340.

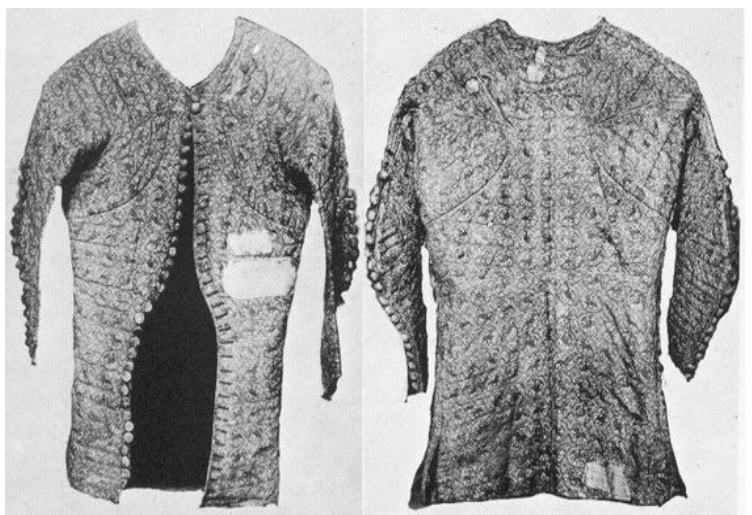
**Pourpoints** and early doublets evolved from arming garments like gambesons into a fashionable layer. A padded pourpoint would be worn under armor, but they could be made from silk or wool as a stylish garment for non-fighting clothing. A famous pourpoint is the extant one worn by Charles de Blois in the late 14th century. They were often quilted like an arming garment, but could be made from just one or two layers of fabric. Fabrics include linen, wool, and silk. The extant one is gold and white silk brocade.



Queste del Saint Graal,, Italy 1380-1385.



Speculum historiale, vol. III 1370-1380.

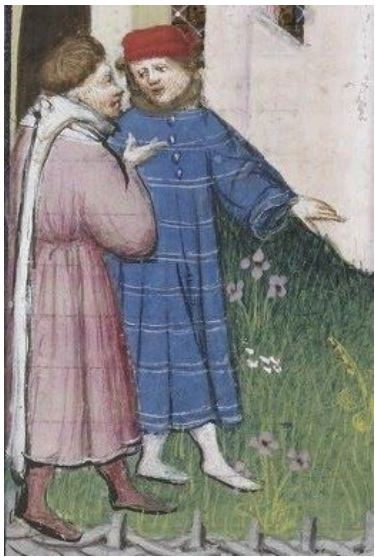


The Charles de Blois pourpoint.

Men also had what were known as **gowns**. They were very fashionable, usually loose, had tight or full sleeves, and were commonly knee length, but you can see floor length or even hip length gowns too. A well-known extant gown is from the Herjolfsnes finds in Greenland from the 14th century. Fabrics were usually wool and silk as gowns were worn primarily by the wealthy. They often buttoned up the front, either at the neck or all the way to the hem.



Tacuinum of Paris - late 14th c.



De mulieribus claris, 1403.



Les Grandes chroniques de France, 1332-1350. Gaston Phoebus, c 1390.



## Outerwear

Men had a wide range of outer garments to keep them warm and protected from the elements. **Cloaks** we are familiar with, but if you want a garment that gives more range of motion, consider a **ganache** (two on left) or the **gardecorps** (two on right). A ganache was a long surcote with draping sleeves, and opened on the sides. The gardecorps usually had pleated sleeves that were open at the armpit. Fabrics should be wool, and can be lined in wool, linen, silk, or fur. Short **cap**es are also accurate.



Cantigas de Santa María, 1285.



Aldobrandino da Siena, 1285.



Speculum historiale, 1370-1380.

## Accessories

The accessories for the 14th century are what really define your outfit. A simple tunic can look like generic “early period” for the SCA until the right belt and headwear are added. This can be useful if you want to make a tunic or surcote that works for a couple hundred years earlier than 14th century, too.

Headwear can include **coifs**, **hats**, and hoods worn as hats. A coif is a simple linen hat with ties that go around the chin. They can be worn alone or underneath another hat (or helmet or maille). Hats included the famous bycocket (aka “Robin Hood hat”, which is inaccurately named as Robin Hood, if he lived, was about 200 years before this style came around), usually made of felted wool but could be made from heavy silks. You also see straw hats to protect from sun, and many shapes of wool felt hats. The chaperon was a hat that evolved from being a rolled up hood worn on the head to a padded roll of fabric. All of these hat styles were worn into the 15th century.



Roman de la rose.



Luttrell Psalter.



Maciejowski Bible.



Manesse Codex, 1300-1330.



Luttrell Psalter, 1325-1340.



Bibliotheque de Geneve, late 13th c.

My personal favorite 14th century accessory is a **hood**. They can be made from linen, wool, or silk. They can have buttons up the front, but a pull-over style is more common for men, although it must be made larger to slip over the head. You could make an unlined hood for summer or a fur-lined hood for winter. Hoods are great sun protection, preventing your neck from being burned. They can have a long liripipe (tail) or no liripipe. They can match or contrast with your garments. They were often embroidered and could have beads and pearls sewn on. Dagged hoods were worn almost exclusively by men.

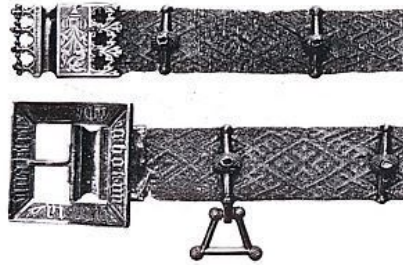


Vows of the Peacock, 1345–50. Romance of Alexander, 1338-44. Greenland, 14th c, Danish National Museum.

**Belts** are an integral accessory because they hold your purse and knife easily. Belts can be leather, textile (fabric or tablet-woven), or metal (aka “plaque belts”). Your belt should have a proper working buckle, not a “d-ring” buckle. Metal mounts and decorative strap ends are a nice look, too. Period belts are very easy to find online from reproduction casting companies. Men’s belts should not exceed 2 inches in width, and even that is very wide for the time period. 1-1.5 inches is most common.



Mendel Hausbuch I, c. 1425.

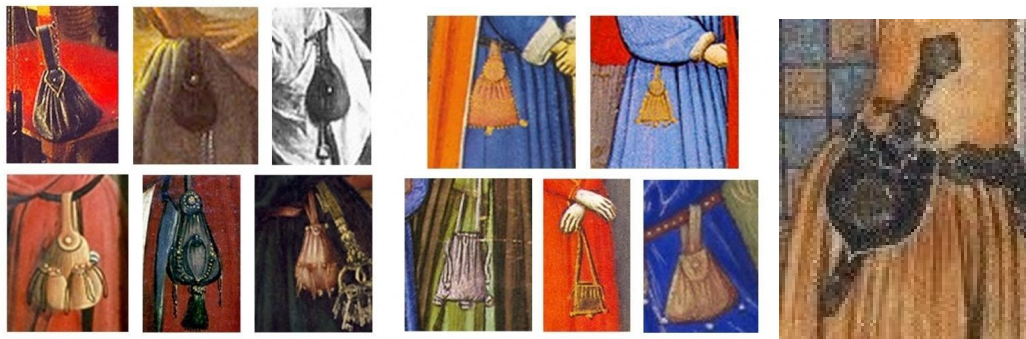


Belt from 14th C. Pomerania, tablet woven silk.



Edward the Black Prince, c1380.

A **pouch** or bag is a very important accessory and is often overlooked by men. They hang from your belt or from a cross-body shoulder strap, and are great for holding our modern necessities at events. For men, they were often leather, but textile ones are also found. Stick your knife through the top as a convenient and period method to hold it. Pouches can be purchased online at Etsy.com (type in 14th century pouch or bag), often found sold by merchants at events, or better yet, make one yourself! Find free patterns online.



## Print Sources:

Thursfield, Sarah. *The Medieval Tailor's Assistant*. Costume and Fashion Pr; 2nd edition, 2015.

Crowfoot, Elizabeth, Frances Prichard and Kay Staniland, *Textiles and Clothing c. 1150 -c. 1450*, Museum of London, 1992

Netherton, Robin, and Gale R. Owen-Crocker, editors. *Medieval Clothing and Textiles Series*. Woodbridge, Suffolk, UK, and Rochester, NY, the Boydell Press, 2005-2017

See the complete list of topics here: <http://www.larsdatter.com/medieval-clothing-and-textiles.htm>

Newton, Stella Mary. *Fashion in the Age of the Black Prince: A Study of the Years 1340-1365*. Boydell Press.

2012

Fransen, Nordtorp-Madson, Ostergard, Norgard. *Medieval Garments Reconstructed: Norse Clothing Patterns*. Aarhus University Press, 2010 This book includes 14th C. clothing from Greenland, which don't necessarily reflect the common fashions seen on the European continent and England.

## Online sources:

<http://rosaliegilbert.com/index.html>

<http://www.neulakko.net/>

<http://www.larsdatter.com/index.html>

<http://cottesimple.com/>

<http://www.personal.utulsa.edu/%7Emarc-carlson/cloth/bockhome.html>

Some Clothing of the Middle Ages - Historical Clothing from Archaeological Finds, Compiled by I. Marc Carlson

## Sources to purchase 14th century clothing:

HistoricEnterprises.com

Revivalclothing.com

<https://www.medieval-market.com/>

<http://www.medievaldesign.com/english.asp>

<http://www.lorifactor.com/>

<http://www.armourandcastings.com/>

<https://www.etsy.com/shop/PeraPeris>

<https://boots-by-bohemond.myshopify.com/>

# Kingdom Calendar

## February 2020

1	<a href="#">Winter University</a>	Dun Carraig	St Mary's City, MD ( <a href="#">Map</a> )
8	<a href="#">Bright Hills 26th Baronial Anniversary</a> (R)	Bright Hills	Manchester, MD ( <a href="#">Map</a> )
8	<a href="#">Medieval Arts in the Park</a>	Ritterwald	Aiken, SC ( <a href="#">Map</a> )
14-16	<a href="#">Nottingham Coill's XL-ent 40th Birthday</a> (Pr)	Nottingham Coill	Bennetsville, SC ( <a href="#">Map</a> )
15	<a href="#">A Day of Love</a>	Marinus	Virginia Beach, VA ( <a href="#">Map</a> )
15-16	<a href="#">Aedult Swim V</a> (P)	Aethelmearc	
21-23	<a href="#">Ymir 45</a> (R,H)	Windmasters' Hill	Ellerbe, NC ( <a href="#">Map</a> )

## March 2020

7	<a href="#">Kingdom Arts &amp; Sciences Festival</a> (R,H)	Atlantia	Matthews, NC ( <a href="#">Map</a> )
14-22	<a href="#">Gulf Wars XXIX</a> (R,H)	Gleann Abhann	
14	<a href="#">St Paddy's Day Blood Bath</a>	Ponte Alto	Vienna, VA ( <a href="#">Map</a> )
14	<a href="#">Raven's Cove Baronial Birthday (Battle of Brunaburh)</a>	Raven's Cove	Richlands, NC ( <a href="#">Map</a> )
14	<a href="#">A Day of DaVinci</a>	Cyddlan Downs	Trenton, SC ( <a href="#">Map</a> )
14	<a href="#">Irish Holiday</a>	Crois Brigte	Winston Salem, NC ( <a href="#">Map</a> )
21	<a href="#">Caer Mear Baronial Birthday</a>	Caer Mear	Mechanicsville, VA ( <a href="#">Map</a> )
27-29	<a href="#">Hidden Mountain Birthday and Investiture</a> (R)	Hidden Mountain	Bennettsville, SC ( <a href="#">Map</a> )
27-29	<a href="#">Academy of St. Clare of Assisi V: Keeping You in Stitches</a>	Aethelmearc	
28	<a href="#">Defending the Gate 2020</a>	Sudentorre	Spotsylvania, VA ( <a href="#">Map</a> )

## April 2020

3-5	<a href="#">Spring Coronation of Anton and Luned</a> (R,H)	Atlantia	Amelia, VA ( <a href="#">Map</a> )
17-19	<a href="#">Night Under a Faie Moon</a>	Lochmere	Annapolis, MD ( <a href="#">Map</a> )
18	<a href="#">Birthday of the Dragon</a>	Saint Georges	Easley, SC ( <a href="#">Map</a> )
18	<a href="#">Tir-y-Don's Italian Renaissance Baronial Birthday</a>	Tir-y-Don	Yorktown, VA ( <a href="#">Map</a> )
24-26	<a href="#">Mists of Atlantia: Gawain and the Green Knight</a>	Misty Marsh by the Sea	Bennettsville, SC ( <a href="#">Map</a> )
24-26	<a href="#">Revenge of the Stitch VII</a>	Spiaggia Levantina	Denton, MD ( <a href="#">Map</a> )
24-26	<a href="#">Royal Archery Tournament</a> (R)	Bright Hills	Glen Arm, MD ( <a href="#">Map</a> )



# The Barony Around the Web

---

Many members of the populace have a Web Presence. Please visit their websites and share in the great content. Please contact the Chronicler if you want to promote your site.

Baroness Jane Fox <https://jezebeljane.blogspot.com/>

Baron John Biggeheved <https://biggeheved.com/>

Mistress Kaleeb the Green Eyed <http://kaleeb.galtham.org/>

Learn Fiore <http://learnfiore.org/>

Baron Llwyd Aldrydd <http://baronllwyd.org/>

Lady Mariss Ghijs <https://opusmariss.wordpress.com>

Lady Mevanou verch Reys Yriskynit <https://mvry1sca.wordpress.com/>

Lord Pietro Trevisan <https://www.facebook.com/lordpietrotrevisan>

## Baronial website

Our Web Minister maintains our baronial website. He can be contacted with any content changes that need to be made.

<https://www.tirydon.atlantia.sca.org>

## Baronial Facebook Group

We share some informal announcements and share content on our Facebook group. It's another way to stay connected with those in the Barony.

<https://www.facebook.com/groups/343471645861986/>

## Kingdom eNewsletters

Log in with your SCA Member Portal username and password. This requires at least an associate membership to access. Please contact SCA corporate with any log in issues.

<https://members.sca.org/apps/#SignIn>





# Baronial Meeting Minutes

---

Location:

**Tabb Library**

100 Long Green Blvd, Yorktown, VA 23693

Map: <http://bit.ly/2iBgfXR>

---

Date and Time:

January 26th @3PM at Tabb Library

Next Meeting's Date and Time:

February 16 @ 3PM at Tabb Library

---

---

## *Baron and Baroness*

---

Thank you to all those who supported the Barony at MARSCON. We ran the Salty Slug tavern on Friday and had a good turnout. There was dancing and a lot of food. We had a fan tab that was manned on Saturday with the help of Marinus.

Our next meeting will be preceded by a dance class sponsored by the Tabb Library. Please RSVP with the library as well as through the Facebook event. The library does not count signing up on Facebook, but it is good for our information!

### Baronial Progress

- Ride sharing and Crash Space: Please let their excellencies know if you need ride sharing or crash space assistance.
- Additional progress has been updated on Facebook

Day of Love    Feb 15

---

## *Officer Reports*

---

### *Seneschal*

Kingdom is soliciting feedback on moving the date of Twelfth Night to the weekend of MLK, Jr Day. This conflicts with MARSCON every year. Please visit the Kingdom Facebook page and provide your feedback on the conversation thread or send comments in via email.

### *Exchequer*

We have money. We will be updating the signature card. The following names will be included for the bank: Robin A Leguillow, Holly Cunningham, Deborah deTreville, Pamela Lemaster, Lloyd Eldred, Joshua Kincaid

I have a deputy now. Income Statement and Q4 Comparative Balance Statement will be in the newsletter for the bank.



## *Chatelaine*

Dance practice next month is sponsored by the library. Please RSVP with the library. Wear garb or SCA t-shirts.

We have been asked to participate in a demo at the Williamsburg Library on March 8. It will be two hours in the afternoon. They have requested easy hand crafts with low startup costs. We will have three 6' tables, with each craft taking approximately half a table. Potential crafts include embroidery, spinning, jewelry making. We will have kumihimo kits to demo and pass out. The library will need a full list of crafts for their event announcements. Please contact the chatelaine to confirm attendance. They expect between 30-75 people.

## *Herald*

Two submissions have passed Kingdom and moved on to review with Laurel.

There will be an A&S class covering Heraldry for Non-Heralds. Date TBD.

## *Knight Marshal*

There has not been a lot of interest in heavy fighting lately. Rapier and archery practice continue to happen, weather permitting. There will be a few equestrian practices upcoming.

Marinus would like to try doing joint practices. Their practice has been strong with heavy fighters. The proposal is to arrange carpool twice a month, so Marinus can have a rapier presence at their practice and we can have a heavy presence at ours. It was agreed that we should work with Marinus to setup some dates to carpool.

## *Archery*

Practices are happening. Please request Loaner equipment in advance is available. Training class is required through Newport News Park in order to shoot.

## *Arts and Sciences*

We had a great class last week with 20 people in attendance, including two new people. One new to the barony, originally from Aethelmarc, and the other new to the SCA. This weeks class will be on illumination, specifically making and using feather paint brushes. The first week of February will be Spring planning. We will be planning through Pennsic.

## *Chronicler*

We have a new Chronicler! Working on updating the newsletter to revised standards from Unevent. Waiting on a response from Kingdom as the handout is difficult to read.

Submission deadline is 25<sup>th</sup> of the month for all Newsletters in the Kingdom. Please send content! We had a request for A&S class notes to be included in the newsletter. If teachers would like them included, please email them to the Chronicler. Any other content is greatly appreciated as well.

Model Releases are available. Please sign one if there is interest in being in the Newsletter. This will ease including pictures of the populace in future newsletters. Option 1 is the most flexible option. Please let me know if you have any questions about the Society's usage of the releases or options on the form.

We have 19 Model Releases signed.



## *Web Minister*

There are a few updates that need to be done to the website, officer updates and creation of a page for Baronial Birthday.

---

### *Old & New Business*

---

#### *Old Business*

##### *Baronial Birthday*

Date: April 18<sup>th</sup> Tentative Date.

MIC: Kent (Sir Tnek)

Feastocrat: Jessica Baas (Christina O'Cleary)

The trailer is at Hannah's and will need to be moved to the event and to its new home following the event. Andrei has volunteered to help move the trailer and list field. Baron John volunteered as backup.

We need verbage from the Baron and Baroness for the A&S competition.

We are discussing holding the archery championship on Sunday, April 5. There is a debate over whether or not to have a heavy weapon tournament. As we do not have many active heavy fighters, we will need to know if it is worth it. Rapier scenarios are in the works.

PayPal is pending, we are having issues with setting it up. Checks are being accepted for reservations, and can be sent to the Exchequer.

We have one outdoor merchant confirmed.

#### *New Business*

##### *Storage sites*

We need to move the trailer, list field, loaner armor, and other baronial possessions from Hannah's house. The trailer will go to Jenn, list field to their Excellencies, loaner armor to Lady Thóra.

##### *Birthday Feast*

Pietro has graciously volunteered to increase the budget so we can have all the finest meats (swordfish and lamb). An application has been put in for Restaurant Supply which will decrease food costs. We have a few volunteers for sous chefs. The menu is currently being tested and finalized. An initial menu will be sent to the autocrat.

##### *Endview as a possible site?*












It is a primitive site with a primitive kitchen. If we were to hold an event there we would need to build our own outdoor kitchen or have it be a camping event.

##### *Youth Armor Kits*

Play it Again Sports has LaCrosse armor kits for \$85 and helmets for \$35. Pietro has leather to make youth gorgets. We are exploring the possibility of having youth combat at Birthday if there is enough interest.



# Baronial Officer Regnum

	<b>Baron:</b>	John Biggeheved (John McCord)	<a href="mailto:baron@tirydon.atlantia.sca.org">baron@tirydon.atlantia.sca.org</a> (757) 771-0267 NLT 9pm
	<b>Baroness:</b>	Oriana of Xylina (Audrey Tweed-McCord)	<a href="mailto:baroness@tirydon.atlantia.sca.org">baroness@tirydon.atlantia.sca.org</a> (757) 291-5607 NLT 9pm
	<b>Seneschal (President):</b>	Llwyd Aldrydd (Lloyd Eldred)	<a href="mailto:seneschal@tirydon.atlantia.sca.org">seneschal@tirydon.atlantia.sca.org</a> (757) 875-0033 NLT 9pm
	<b>Chancellor of the Exchequer (Treasurer):</b>	Alyna of the Ilex (Holly Cunningham)	<a href="mailto:exchequer@tirydon.atlantia.sca.org">exchequer@tirydon.atlantia.sca.org</a> NLT 9pm
	<b>Chatelaine (New member support):</b>	Kaleeb Auon Khadrea (Patty Ellison)	<a href="mailto:pellison@galtham.org">pellison@galtham.org</a> (757) 875-0033 NLT 9pm
	<b>Chronicler (Secretary):</b>	Christina O'Cleary (Jessica Baas)	<a href="mailto:chronicler@tirydon.atlantia.sca.org">chronicler@tirydon.atlantia.sca.org</a> (310) 480-7155 NLT 9:30pm
	<b>Social Media:</b>	Pietro Trevisan (Joshua Kincaid)	<a href="mailto:socialmedia@tirydon.atlantia.sca.org">socialmedia@tirydon.atlantia.sca.org</a> (757) 532-4036 NLT 9pm
	<b>Herald:</b>	Pórhild Roðmarsdóttir (Tabitha Schmidt)	<a href="mailto:herald@tirydon.atlantia.sca.org">herald@tirydon.atlantia.sca.org</a>
	<b>Knight's Marshal:</b>	Tnek the Ainissestor (Kent Baldwin)	<a href="mailto:marshal@tirydon.atlantia.sca.org">marshal@tirydon.atlantia.sca.org</a> NLT 9pm
	<b>Marshal of Archery:</b>	Leofric of Oxenford (Mike Durling)	<a href="mailto:archer@tirydon.atlantia.sca.org">archer@tirydon.atlantia.sca.org</a>
	<b>Minister of Arts &amp; Sciences:</b>	Cairistiona inghean Mhuireadhaigh (Carol Vanderspoel)	<a href="mailto:moas@tirydon.atlantia.sca.org">moas@tirydon.atlantia.sca.org</a> (757) 819-3296 NLT 9:30pm
	<b>Webminister:</b>	Llwyd Aldrydd (Lloyd Eldred)	<a href="mailto:webminister@tirydon.atlantia.sca.org">webminister@tirydon.atlantia.sca.org</a> (757) 875-0033 NLT 9:30pm



## Statement of Ownership

---

This is the Nod-Y-Rit, a publication of the Barony of Tir-y-Don of the Society of Creative Anachronism, Inc (SCA). The Nod-Y-Rit is available from Jessica Baas ([chronicler@tirydontia.sca.org](mailto:chronicler@tirydontia.sca.org)) Subscriptions are free as all publications are available electronically. This newsletter is not a corporate publication of Society of Creative Anachronism, Inc. and does not delineate SCA policies. (c) Copyright 2018, Society for Creative Anachronism, Inc. For information on reprinting letters and artwork from this publication, please contact the Chronicler of Tir-y-Don, who will assist you in contacting the original creator of the piece. Please respect the legal rights of our contributors.

## Submissions

---

Please send submissions by the 25th of the month to: [chronicler@tirydontia.sca.org](mailto:chronicler@tirydontia.sca.org). Exact issue of publication is at discretion of Chronicler due to copy editing and other administrative reasons including seeking permission to publish. Although there are exceptions, publication of articles requires thirty days' worth of processing. Short news pieces will be accepted up to the deadline of the previous month. That is if you want your letter or news item to be published in the April issue please submit by March 25<sup>th</sup>. For an article in the April issue please submit by February 25<sup>th</sup>. The chronicler will work to make these times scales more efficient, but it might not work out. Your patience is appreciated.

All forms are available for the Society for Creative Anachronism Library of SCA Documents:  
<http://www.sca.org/docs/library.html>

All **pictures** require an email with permission or a signed release forms below:

All folks within the picture must sign a "Model Release Form" or provide permission in writing.

The photographer must sign a "Photographer Release Form" or provide permission in writing.

To see who has already signed a release for model in the Kingdom see:

<http://chronicler.atlantia.sca.org/Release-Listing.html>

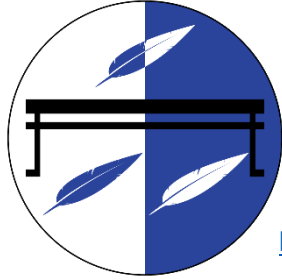
**Articles** require their author(s) sign a "Creative Work Copyright Assignment / Grant of Use Form".

All forms are available on the Society for Creative Anachronism website on the Library of SCA Documents page: <http://www.sca.org/docs/library.html>



## Marshal Information

---



### Become a MOL

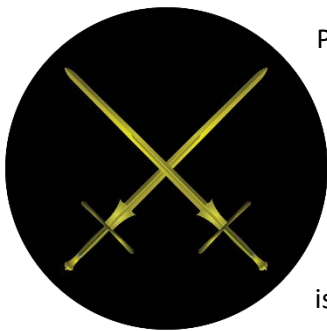
Want to serve the Fighter Community by providing Tournament organization and keeping the Fighting Authorizations documented? Consider becoming a Minister of the List.

Please visit the Kingdom MOL website for more information and forms:

<http://mol.atlantia.sca.org/ForMoLs/index.html>

### Become a Marshal

Do you enjoy fighting activities at events and practices? Many folks invest significant time to keep these activities safe. Consider becoming a marshal to help keep these activities happening in the future.



Please visit the Earl Marshals Website for more information:

<https://marshal.atlantia.sca.org/procedures/mit/>

### Marshal Event Report Submission

Participants, Fighters and Marshals can all submit Event reports for fighting activities. If you see something you wish to report visit the Kingdom Earl Marshal Website. Include things like injuries, equipment failures, or other issues you see.

Submit a report here: <https://warrant.atlantia.sca.org/reports/new/1>

### Warranted Marshals

The Kingdom maintains a list of warranted marshals and Marshals in Training. A list of marshals who have expired warrants is also maintained here.

Visit: <https://warrant.atlantia.sca.org/warrants/branch/6/1>

## Award Recommendations

---

### Baronial Award Recommendations

Baronial Award Recommendations are sent to the Coronet. Please use [baron@tirydon.atlantia.sca.org](mailto:baron@tirydon.atlantia.sca.org) and [baroness@tirydon.atlantia.sca.org](mailto:baroness@tirydon.atlantia.sca.org).

### Kingdom Award Recommendations

The Kingdom maintains a database of award recommendations and what events potential recipients will attend in the future. Visit: <https://award.atlantia.sca.org/>

### Review your Order of Precedence Entry

Recent name change or award? Please visit the Atlantia's Order of Precedence (OP) and request any updates or corrections as needed.

Visit the OP here: <http://op.atlantia.sca.org>

Submit Corrections requests here: <http://op.atlantia.sca.org/corrections.php>





**THE SOCIETY FOR CREATIVE ANACHRONISM, INC.**  
**FINANCIAL REPORT**

**Branch:** Barony of TiryDon **Period:** 1/01/2019 to 12/31/2019

## COMPARATIVE BALANCE STATEMENT

For **Cumulative** Quarterly Reports, use **last year's** Comparative Balance Sheet (End) amounts for the (Start) amounts.

For **Sequential** Quarterly Reports, use **last report's** Comparative Balance Sheet (End) amounts for the (Start) amounts.

For **Year-end** Reports, the (Start) numbers will be provided to you by the Kingdom Exchequer. The numbers may have changed from what was submitted last year because of transfer reconciliation between your account and other accounts.

The Year-end Report must be signed by the person preparing the report.

**(START) FIGURES MAY NOT BE CHANGED UNDER ANY CIRCUMSTANCES!**

		USD \$	USD \$	
<b>I. ASSETS</b>	(from page)	Start	End	Diff
a) Undeposited and Non-Interest Bearing Cash	(2,5a)	<b>\$8,636.55</b>	9,513.55	877.00
b) Cash Earning Interest	(2)	0.00	0.00	0.00
c) Receivables	(5a)	0.00	0.00	0.00
d) Inventory For Sale (Major Inventory)	(6)	0.00	0.00	0.00
e) Regalia & Non-Depreciated Equipment	(7)	500.00	500.00	0.00
f) Depreciated Equipment	(8)	6,533.08	6,533.08	0.00
g) MINUS Accumulated Depreciation	(8)	(6,533.08)	(6,533.08)	0.00
h) Prepaid Expenses	(5a)	0.00	0.00	0.00
i) Other Assets	(5a)	0.00	0.00	0.00
<b>j) TOTAL ASSETS</b>	Add a through i, subtract g, then add h and i	9,136.55	10,013.55	877.00

<b>II. LIABILITIES</b>				
a) Newsletter Subscriptions Due	(15)	0.00	0.00	0.00
b) Deferred Revenue	(5b)	0.00	0.00	0.00
c) Payables	(5b)	0.00	0.00	0.00
d) Other Liabilities	(5b)	0.00	0.00	0.00
<b>e) TOTAL LIABILITIES</b>	Add a through d	0.00	0.00	0.00

<b>III. NET WORTH</b>		Line I.i minus Line II.d	9,136.55	10,013.55
<b>Proof:</b>	Change in Net Worth	III(End) - III(Start) <b>(A)</b>	877.00	<b>(A = B) ? If NO, the report is incomplete.</b>
	Net Income	Income Statement Line 32 <b>(B)</b>	877.00	

Legal Names:	Print	Sign
Exchequer:	Holly Cunningham	Date:
Seneschal:	Lloyd Eldred	Date:

Signatures below certify that the information on this report is correct and complete to the best of their knowledge.



**THE SOCIETY FOR CREATIVE ANACHRONISM, INC.**  
**FINANCIAL REPORT**

Branch: Barony of TiryDonPeriod: 1/01/2019to 12/31/2019

## INCOME STATEMENT

USD \$

INCOME		(from page)	Gross	Cost	Amount
1a	Fund Raising: <b>Non-medieval</b> activities to earn	(11a)		INTERNAL	155.00
1b	income (raffles, car washes, bake sales, etc.)	(11a)		EXTERNAL	0.00
2	Direct Contributions/Donations: <b>No activity</b>	(11a)			0.00
3a	Activity Related: <b>Medieval</b> activities to earn income	(11a)	Income from Demos and Activity Fees		0.00
3b	(events, demos, heraldry fees)	(11b)	Adjusted Gross Event Income		2,157.23
4a	Funds Transferred In from Another SCA Account	(9)	WITHIN KINGDOM		0.00
4b		(9)	OUTSIDE KINGDOM		0.00
5	Interest Earned				
6	Net Inventory Sales Income	(6)	Gross-Cost=Net	0.00	0.00
7	Other Sales Income	(7)			0.00
8	Adjusted Gross Newsletter Income	(15)			0.00
9	Net Advertising Income	(11b)	Gross-Cost=Net	0.00	0.00
10	Other Income	(11b)			0.00
11	<b>TOTAL GROSS INCOME</b>		(Sum of Lines 1 through 9)		2,312.23

EXPENSES		(from page)	Office & Admin.	Activity Related	Fund Raising	Total
12	Advertising (NON-SCA)	(12a)		0.00		0.00
13	Bad Debts	(12a)	0.00	0.00	0.00	0.00
14	Bank Service Charges					0.00
15	Depreciation	(8)	0.00	0.00	0.00	0.00
16	Equipment Rental & Maintenance			180.00		180.00
17	Fees & Honoraria	(12a)	0.00	0.00	0.00	0.00
18	Food			271.59		271.59
19	General Supplies		154.44	449.20		603.64
20	Insurance (NON-SCA)	(12b)	0.00	0.00	0.00	0.00
21	Occupancy & Site Charges			300.00		300.00
22	Postage & Shipping, PO Box Rental					0.00
23	Printing & Publications					0.00
24	Released Equipment	(7)	0.00	0.00	0.00	0.00
25	Telephone					0.00
26	Travel (Gas, Tolls, Airfare)					0.00
27	<b>SUB-TOTAL (Lines 12-26)</b>		154.44	1,200.79	0.00	1,355.23
28	Other Expenses				(12b)	0.00
29	Donations to Other 501(c)(3) [Nonprofit] Organizations				(12b)	0.00
30a	Funds Transferred Out to Another SCA Account			WITHIN KINGDOM		80.00
30b				OUTSIDE KINGDOM		0.00
31	<b>TOTAL EXPENSES</b>		(Line 27 TOTAL + Lines 28 to 30b)			1,435.23
32	<b>NET INCOME (MUST MATCH Change in Net Worth)</b>		(Line 11 Minus Line 31)			877.00

Legal Names:	Print	Sign	
Exchequer:	Holly Cunningham		Date:
Seneschal:	Lloyd Eldred		Date: